

**Performance**

Lifting height — on stabilisers	17430.0 mm
Lifting height — on tyres	17180.0 mm
Rated capacity	4000 kg
Capacity (at max. height on stabilisers)	2500 kg
Capacity (at max. height on tyres)	1250 kg
Capacity (at max. reach on stabilisers)	560 kg
Capacity (at max. reach on tyres)	0 kg
Max. reach on stabilisers	13670.0 mm
Max. reach on tyres	13730.0 mm
Crowding force	5000 daN

**Weights**

Weight (unladen)	10970 kg
------------------	----------

**Traction**

Standard tyres	400/80x24
Low speed (forward/reverse)	8.0 km/h
High speed (forward/reverse)	30.0 km/h
Driving modes	Direct drive / soft drive

**Drive System**

Main drive	2-speed hydrostatic motor
Transmission	Hydrostatic with electronic regulation

**Engine**

Make/Model	PERKINS / 1104D-44TA turbo
Fuel	Diesel
Cooling	Liquid
Rated power (DIN 6271) at 2200 RPM	74.5 kW
Maximum torque at 1400 RPM	410.0 Nm
Number of cylinders	4
Displacement	4.40 L

**Hydraulic System**

Pump type	Gear pump with LS valve
Combined pump capacity	135.00 L/min
Working pressure	250.00 bar

**Cycle Times**

Lift time — no load	12.6 s
Lower time — no load	6.4 s
Telescope in time at max. reach — no load	19.4 s
Telescope in time at max. height — no load	16.6 s
Telescope out time at max. reach — no load	28.9 s
Telescope out time at max. height — no load	29.0 s

**Brakes**

Engine braking	Hydrostatic
Parking and emergency brake	Negative brake with hydraulic command

**Fluid Capacities**

Axles and reduction gears front / rear	11.9/11.4 L
Engine oil	8.50 L
Fuel tank	140.00 L
Hydraulic reservoir	77.00 L

**Standard Features**

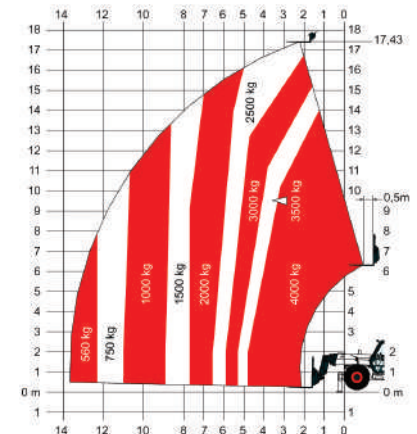
Aggravating Movements Arrester (AMA)	Right and left side mirrors
Hydrostatic transmission	Two way hydraulic supply at the end of the boom
ROPS/FOPS operator cab	Mudguards
Heating, demisting and ventilation	Turbo-charged engine
Front and rear washer/wipers	Narrow hook-up for mounting of the equipment
Suspension seat	Mechanical lock of the equipment
Road lights	Four 400/80x24 tyres
Turn signals	

**Options**

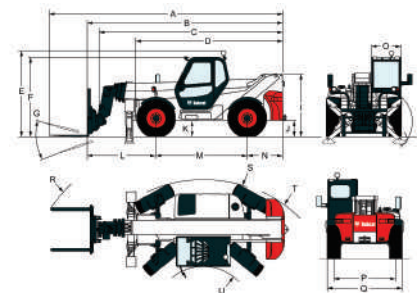
Back up alarm	Carriage with hydraulic attachment lock
Man platform predisposition	Yoke and electrical plug
Second hydraulic function on boom	Roof window wiper
Air conditioning	Windscreen grill
Rotating beacon	Radio remote control
Cooling fan reverser for cleaning purpose	Transmission lock override
Work light on boom	DUNLOP 400/80x24 153B T37 TL tyres

**Load Charts**

With forks and standard 400/80x24 tyres or DUNLOP 400/80x24 156B T37 TL tyres, on stabilisers



Complies with stability test EN1459 Annex B

**Dimensions**


(-) 1804.0 mm	(F) 2473.0 mm
(-) 920.0 mm	(G) 125°
(-) 1200.0 mm	(J) 503.0 mm
(-) 2475.0 mm	(M) 2850.0 mm
(-) 15°	(O) 930.0 mm
(-) 110°	(P) 1992.0 mm
(A) 7415.0 mm	(Q) 2394.0 mm
(B) 6210.0 mm	(R) 6356.0 mm
(C) 6107.0 mm	(S) 4260.0 mm
(D) 4589.0 mm	(U) 1560.0 mm
(E) 2701.0 mm	

**Environmental**

---

Acoustic pressure levels in the cab, EN 12053:2001 (LpA)	82 dB(A)
Level of acoustic power (LWA)	106 dB(A)